

CHANDLER CENTENNIAL CAMPAIGN STRUCTURE

HONORARY CHAIRS

JIM DOUGLAS
Governor, State of Vermont

BERNIE SANDERS
Vermont Senator, United States Senate

PETER WELCH
Vermont Representative, United States House of Representatives

RUSTY DEWEES
Actor/Comedian

SABRA FIELD
Printmaker

EDWARD KOREN
Artist

JAIME LAREDO
Violinist, and Artistic Director and Conductor, Vermont Symphony Orchestra

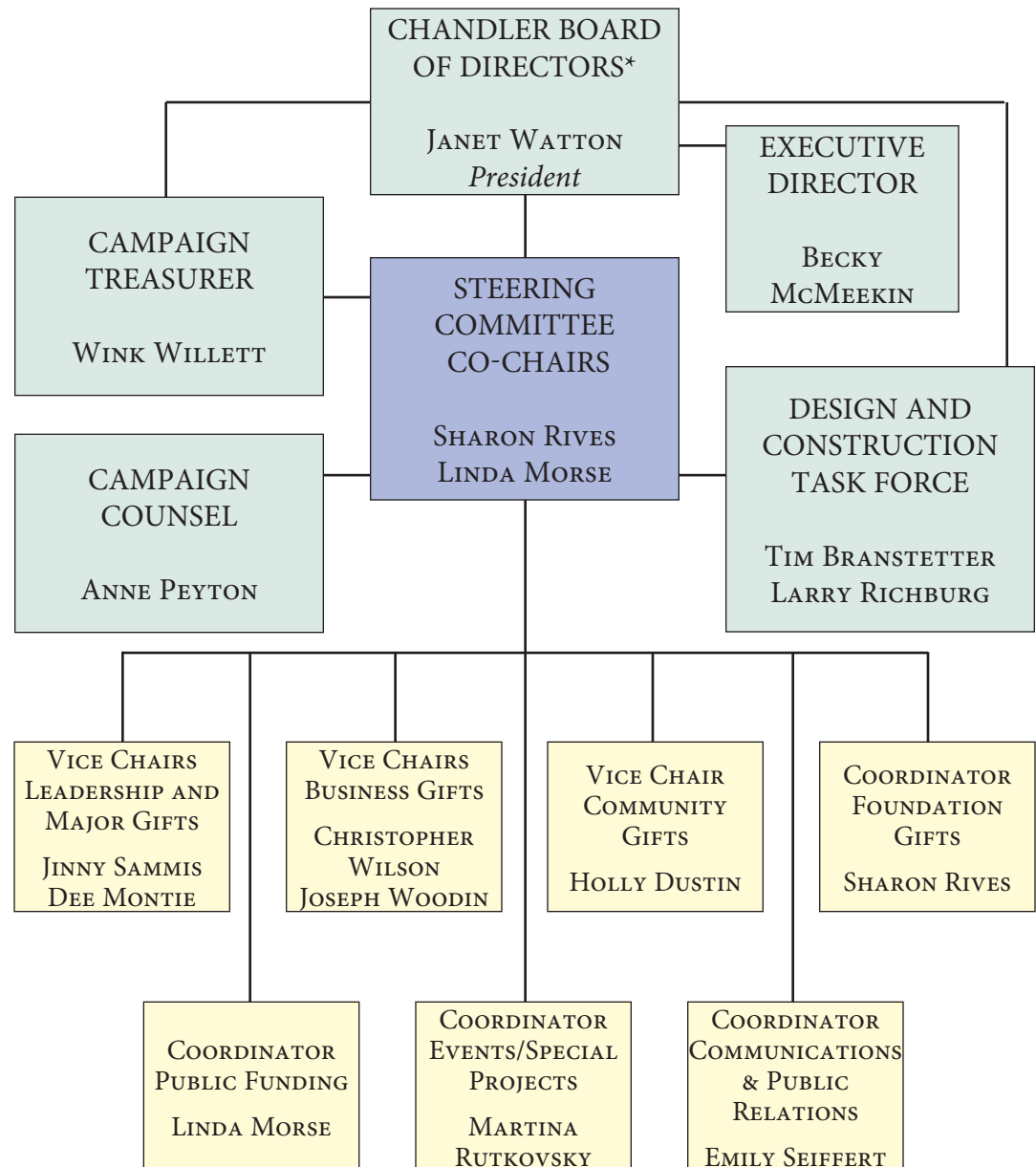
WILLIAM H. MARKLE
Retired Business Executive

CHRISTOPHER O'RILEY
National Public Radio "From the Top" Host

JIM SARDONIS
Sculptor

BRIAN SCOTT
Blue Man Group Member

GWYNETH WALKER
Composer



*Names on overleaf

CHANDLER BOARD MEMBERS, TRUSTEES, AND STAFF

Chandler thanks the many community members who have, over the three decades since the building was rescued from disrepair and the restoration begun, served so well on its Board of Directors or on the Chandler Trustees Committee appointed by the building's owner, the Town of Randolph, or who now serve.

PAST DIRECTORS AND TRUSTEES

CURRENT CHANDLER BOARD OF DIRECTORS AND OFFICERS

Tim Branstetter
Dick Ellsworth
Louise Ferris-Burt
Randy Garner
Assistant Treasurer
Tony Keller
Laura Morris
Vice President
Linda Morse
Susan Porter
Financial Secretary
Sharon Kendall Rives
Joan Sax
Emily Seiffert
Secretary
Janet Watton
President
Wink Willett
Treasurer

Ken Goss
Town Representative

Jim Alexander	Randy Garner	Dee Montie
Trixie Allen	Robin Goodall	Jennifer Moore
Jim Babineau	Kathy Gäss	Linda Nissl
Shirley Baumann	David Gregg	Martha Ostlund, <i>deceased</i>
Mary Ellen Black	Red Hartigan	Jason Perry
Sharon Borchardt	Tom Harty	Shirley Green, <i>deceased</i>
Ann Brandon	Chris Hemond	Janine Reeves
Carl Brandon	Victor Ialeggio	Driscoll Reid, <i>deceased</i>
Betsy Cantlin	John Jackson	Jim Sardonis
Georgia Cone	Hannah Jeffery, <i>deceased</i>	Anna Sease
Rebbie Carleton	Stephen Klein	Becky Seymour
Lewis Crain, <i>deceased</i>	Thurmond Knight	Liz Skrill
Chris Mester Damm	William Markle	Ronni Solbert
Dick Drysdale	Kay McLoughlin	Seth Stoddard
Rachi Farrow	Charlie McMeekin	Marty Tewksbury
Tim Flynn	Lynn McNamara	Pat Woodin
Polly Frankenburg	Karl Miller	Matt Zimet
Shirley Garland	Nancy Miller	

WE ALSO THANK THE PEOPLE WHO SERVE OR WHO HAVE SERVED AS
CHANDLER STAFF, PAST AND PRESENT.

Becky McMeekin, *Executive Director*
Betsy Cantlin, *Community Outreach Manager*
Kathy Corrao, *Box Office & Rentals Manager*
Mimi Burstein, *Technical Director*
Gene & Helene Woodward, *Custodians*
Beth Keenhold, *past Director of Program & Fund Development*
Laura Morris, *past Director of Program & Fund Development*
Seth Stoddard, *past Technical Director*

Revised 7/08